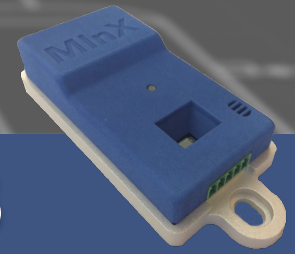


## MINX 0003 Specifications

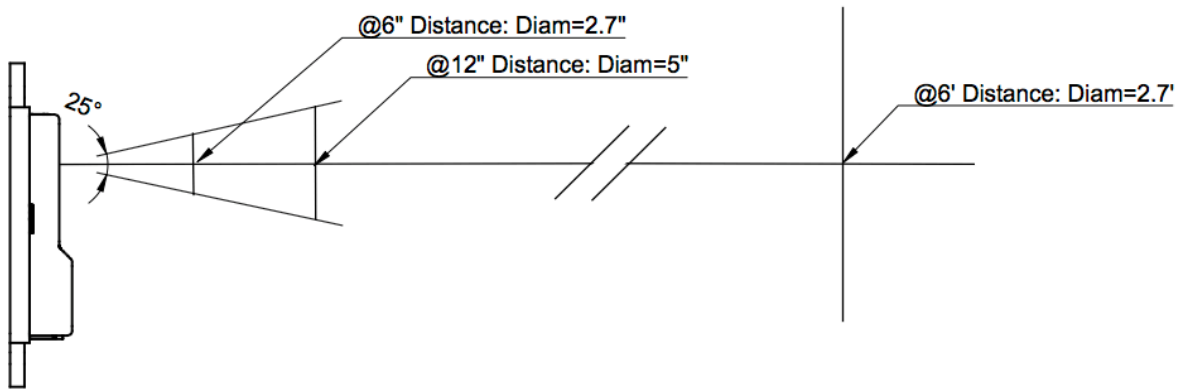
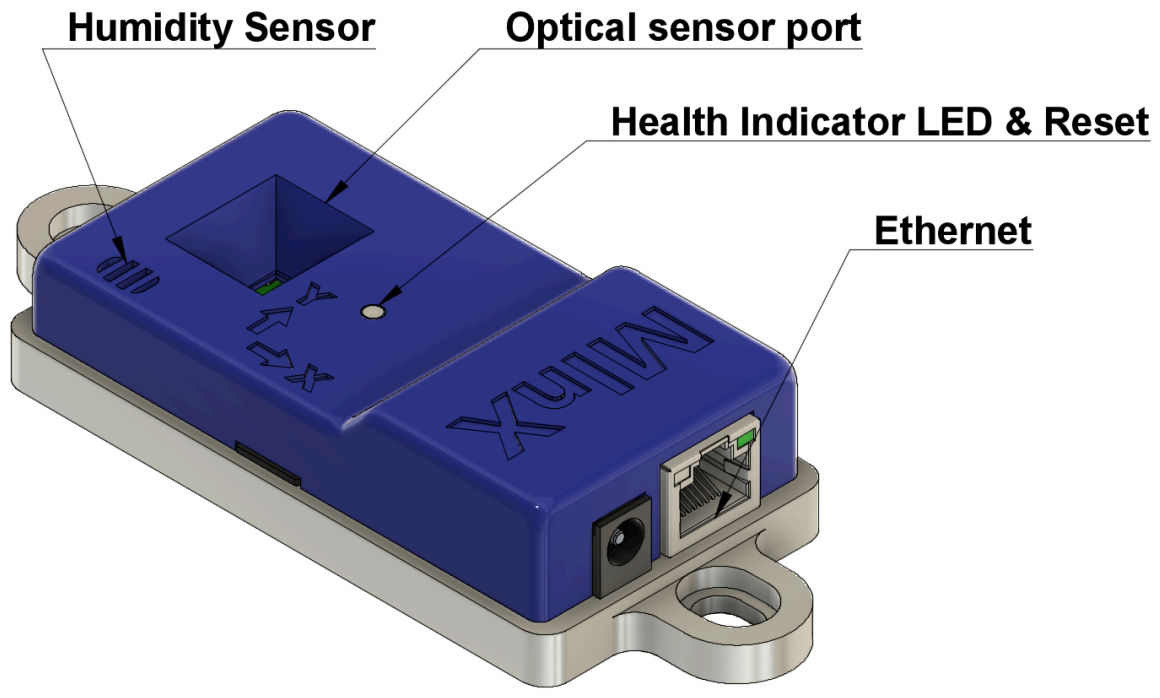
General Specifications	
Built-In Sensors	Ambient Temperature, Ambient Humidity, 3-Axis Accelerometers, Optical Distance
External (Accessory Input) Sensor	Thermocouple, Analog (0-5V), Current(0-20mA with 250 Ohm), Digital Pulse (0-5V)
Event Counting	Ambient Temperature, Accelerometers, Optical Distance, External Temp/Input
Automatically Generated Process Control Charts	Yes
Sensor Sample Storage Interval	1Hz
Sensor Sample Rate For Event Counting	Temperature:1Hz, Accelerometers:400Hz, Optical:10Hz, External:600Hz
Programmable Triggers	Temperature, Humidity, Acceleration, Optical, External
Programmable Trigger Conditions	Max and/or Min Amplitude, Event Count, Accumulated Pulse Count
Triggered Alerts	Email, External Output Actuation, Tigger Log
Logging Memory	Micro SD Card
Storage Consumption	~5.0MB/day
Data File Format	CSV (CSV=comma separated values)
Storage Temperature	-25°C - 85°C
Operating Temperature	-25°C - 65°C
Humidity (non-condensing)	0 - 90%RH
Accessory DC Output	5V +/-10%
Accessory Switched Output	0V/5V
Accessory, Total Combined Current	200mA maximum
Mating Accessory Connector	MFG: Amphenol, PN: 20020008-D051B011F
Real Time Clock w/ Battery Backup	Yes
Mounting Screws for Shock/Vibration Application	1/4"-20 or M6x1 Socket Cap Screw
Ethernet, Auto Negotiation	10/100Mbps, Half/Full Duplex, Auto MIDIX
IP Addressing Modes	DHCP, Zero-Config Link-Local self assignment , Manual
Ethernet Cable Connection	Cat 5 or better
Power Input (POE = Power Over Ethernet)	Ethernet POE (IEEE 802.3)
Laser Type	IR ( 940nm), Class 1, Eye Safe
Optical Sensor Cone Angle	25 degrees
Temperature Settling Time	15 minutes from power up
Thermocouple Types Supported	K,J,N,R,S,T,E,B
Health/Power Indicator	LED
Accessories Included: Accessory connector, K-type Thermocouple, POE injector, Cat5 cable, Micro SD card	

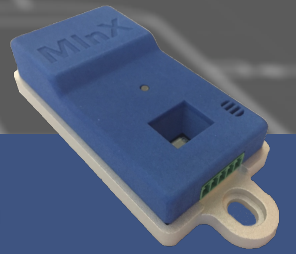
Sensor Specifications	Min	Max	Accuracy
Optical distance (inside lighting conditions)	25mm	2.0m	+/-10%
Ambient Temperature	-25°C	65°C	+/-1.5°C
Ambient Humidity	0%RH	100%RH	+/-2%RH
3-Axis Accelerometers	0g	+/-16g	+/-0.05g
Accessory Input - Thermocouple (with MINX in stable 25C environment)	-210°C	1800°C	+/- (1.5°C + 0.15%)
Accessory Input - Voltage	0.0V	5.0V	+/-0.01V



## MINX0003

**CLASS 1  
LASER PRODUCT**



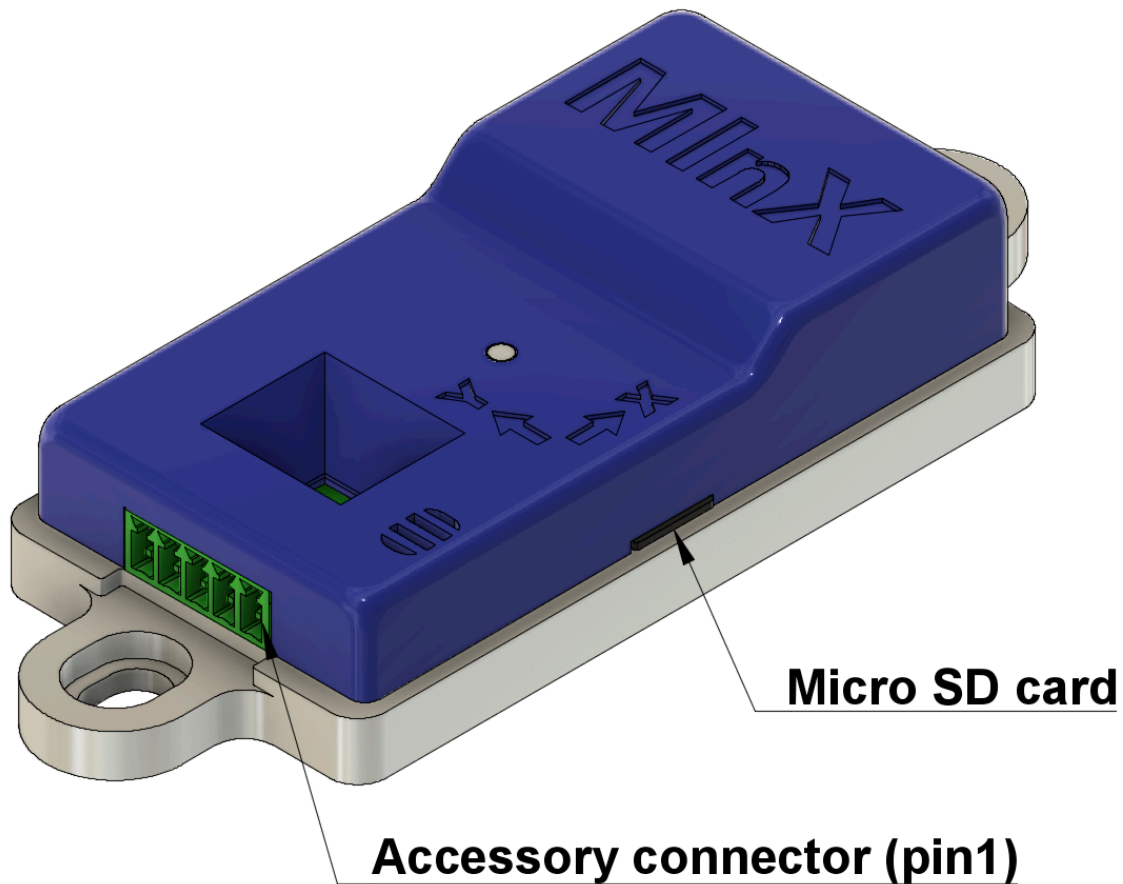


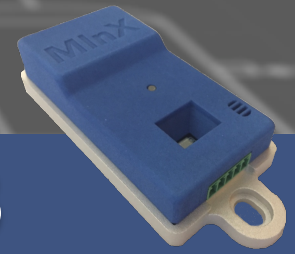
## MINX0003

### Accessory Connector

Pin	Description	V	A
1	DC Output*	5V	200mA
2	Switched Output*	0 - 5V	200mA
3	Ground Return	0V	-
4	Thermocouple, negative input	-	-
5	Thermocouple, positive input / External Input	0 - 5V	-

\*combined output current, maximum 200mA





## MINX0003

